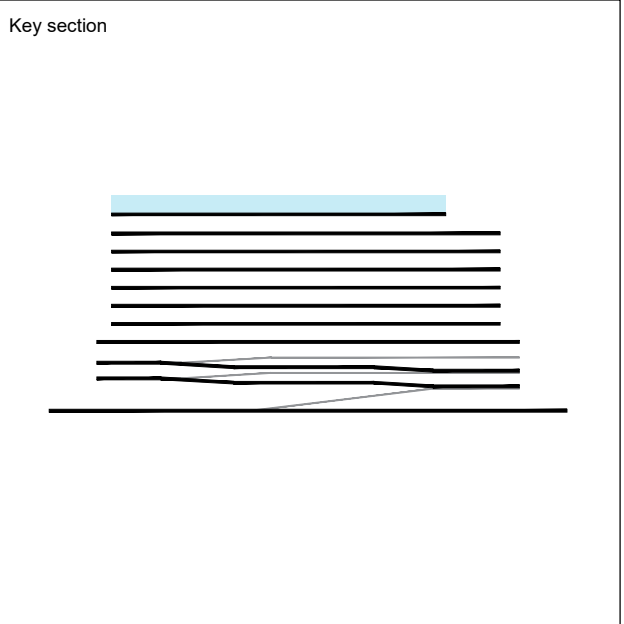


REV.	DATE	DESCRIPTION
01	01-29-2025	D.R.C. SUBMITTAL

ALL MEASUREMENTS MUST BE VERIFIED BEFORE
BEGINNING THE WORKS. NO MEASUREMENTS ARE TO
BE SCALED DIRECTLY FROM THIS DRAWING.



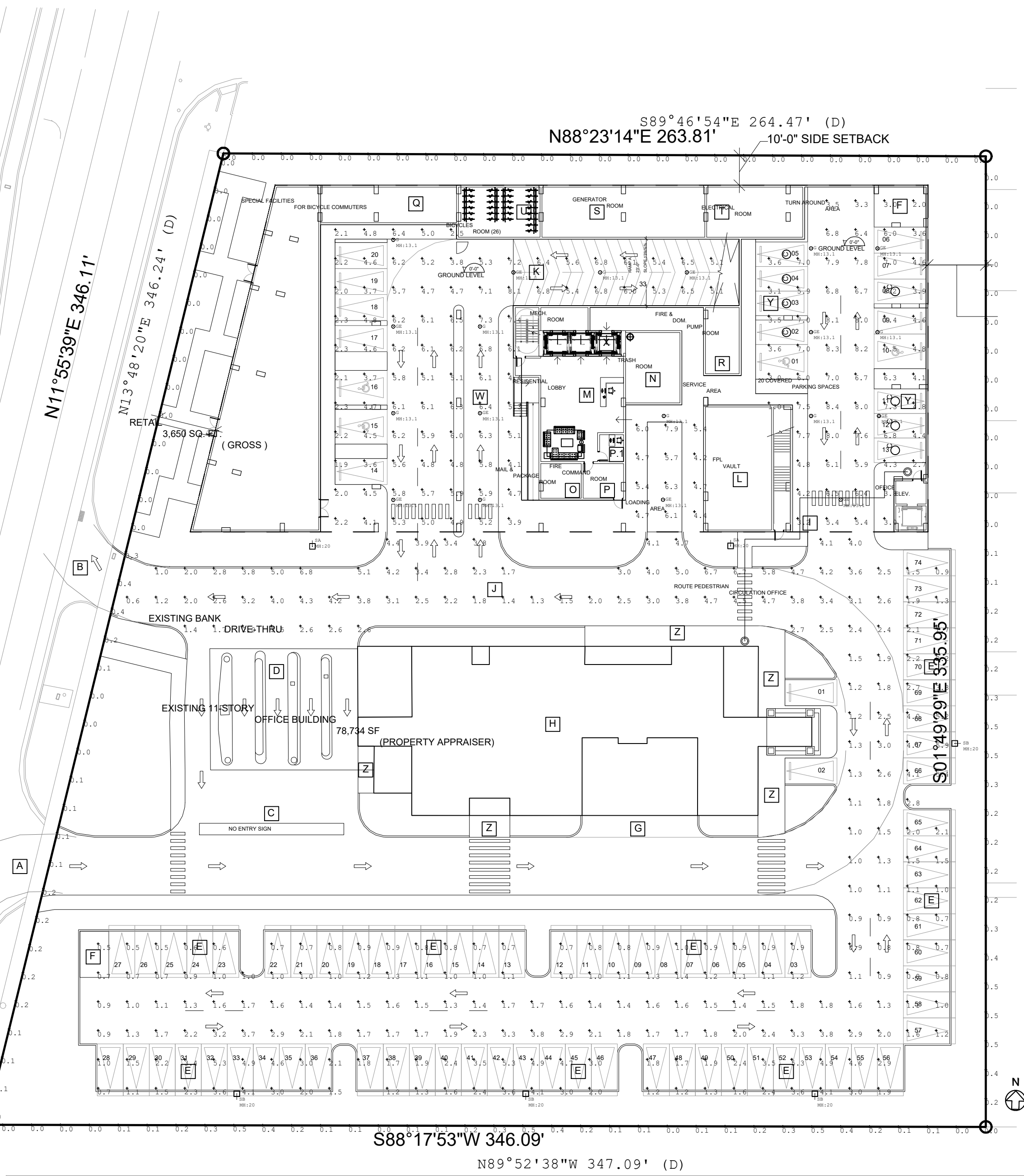
Client
VERA FUND
NICK POLYUSHKIN
& YURI KHARITONENKOV
TEL: 305.833.3303

Project
**1600 S FEDERAL HIGHWAY
(MIXED-USE PROJECT)**
1600 SOUTH FEDERAL HIGHWAY,
POMPAHO BEACH, FL 33062

Title GROUND FLOOR PHOTOMETRICS	
Drawn J. WU	Field ARCHITECTURE
Verified N. TREMBLAY	Scale as shown
Approved S. L'ECUYER	Date 01-29-2025
Project Manager J. WU	Dwg. no. P-001
Project PZ24-1200S-24-838	

DRC

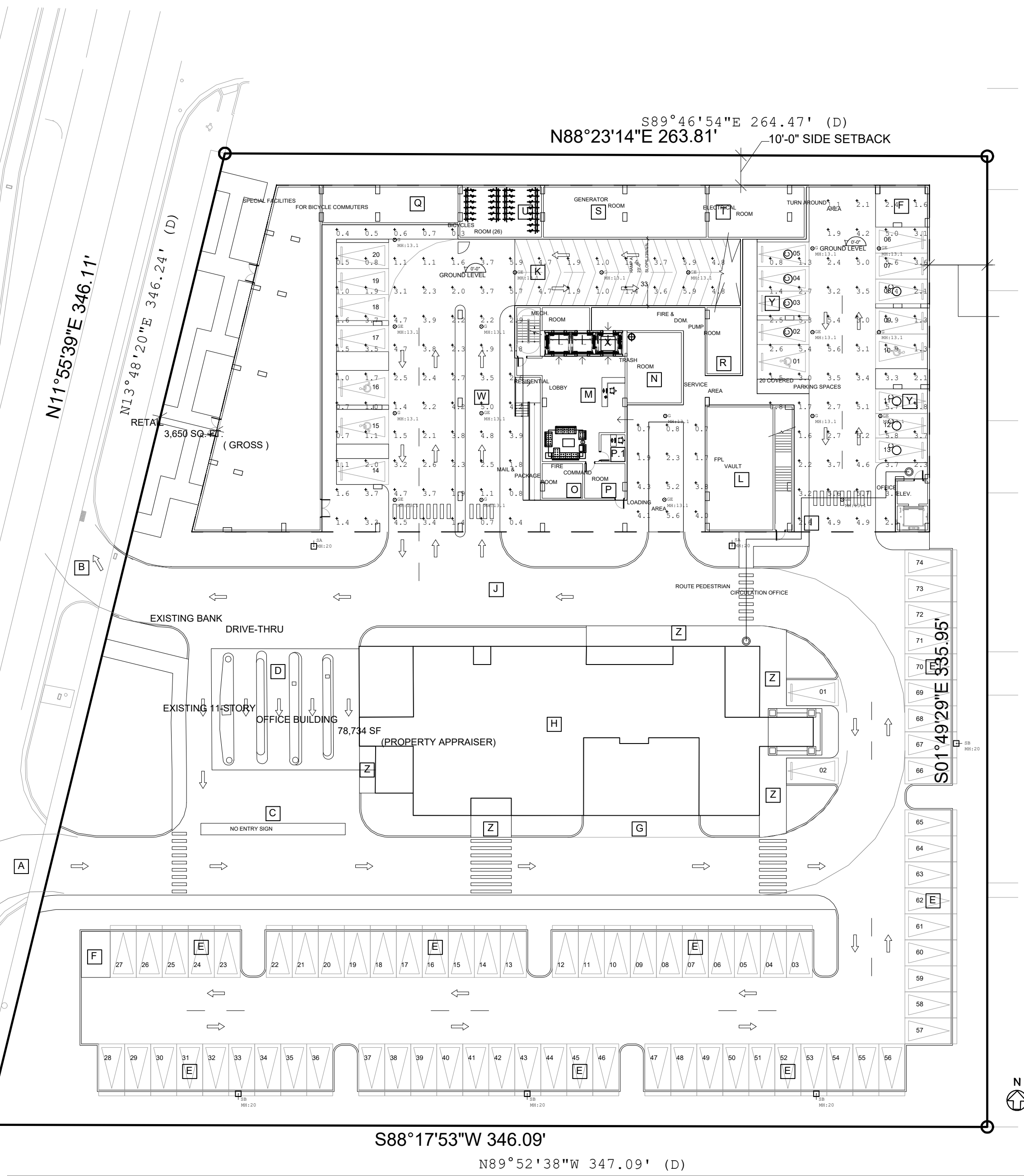
03/05/2025



Luminaire Schedule	Qty	Label	Arrangement	Description	LLF	Luminaire Lumens	Luminaire Watts	Total Watts
9	G	Single	Utopia Lighting LRC-3G-SLED-40K-UNV-WH		0.900	6890	53	477
10	GE	Single	Utopia Lighting LRC-3G-SLED-40K-UNV-WH (Connected to Generator)		0.900	6890	53	530
2	SA	Single	Xtra Light VNTM-20000L-40K-DIM-3M-N-XX-XX-HSS		0.900	14972	152	304
4	SB	Single	Xtra Light VNTM-20000L-40K-DIM-4M-N-XX-XX-HSS		0.900	14968	152	608

Calculation Summary	Label	CalcType	Units	Avg	Max	Min	Avg/Min	Max/Min
Loading Dock	Illuminance	Fc		5.46	7.9	4.2	1.30	1.88
Parking Garage	Illuminance	Fc		5.33	8.4	1.0	5.33	8.40
Parking Lot	Illuminance	Fc		2.21	6.8	0.5	4.42	13.60
Property Line	Illuminance	Fc		0.12	0.5	0.0	N.A.	N.A.

GROUND FLOOR
PHOTOMETRICS - NORMAL
SCALE: 1"= 30'-0"



Luminaire Schedule	Qty	Label	Arrangement	Description	LLF	Luminaire Lumens	Luminaire Watts	Total Watts
9	G	Single	Utopia Lighting LRC-3G-SLED-40K-UNV-WH		0.900	6890	53	477
10	GE	Single	Utopia Lighting LRC-3G-SLED-40K-UNV-WH (Connected to Generator)		0.900	6890	53	530
2	SA	Single	Xtra Light VNTM-20000L-40K-DIM-3M-N-XX-XX-HSS		0.900	14972	152	304
4	SB	Single	Xtra Light VNTM-20000L-40K-DIM-4M-N-XX-XX-HSS		0.900	14968	152	608

Calculation Summary	Label	CalcType	Units	Avg	Max	Min	Avg/Min	Max/Min
Loading Dock	Illuminance	Fc		2.93	5.6	0.7	4.19	8.00
Parking Garage	Illuminance	Fc		2.82	5.9	0.3	9.40	19.67

GROUND FLOOR
PHOTOMETRICS - EMERGENCY
SCALE: 1"= 30'-0"